

Triple A
Angus
AAA *BULL SALE*

Acquire the Angus Advantage

25 *years*
ANNIVERSARY

\$2500 worth of bull credits to
be drawn before the sale!

25th Annual Bull Sale

Saturday, April 9, 2022 • 1:00 p.m.

Johnstone Auction Mart • Moose Jaw, Saskatchewan

OFFERING YEARLING BLACK ANGUS BULLS & HEIFERS

Welcome

FROM TRIPLE A ANGUS

Welcome Cattleman,

WOW.... OUR 25TH ANNIVERSARY SALE!!!

To celebrate this milestone we are offering:

FIVE \$500.00 CREDITS DRAWN BEFORE THE SALE FOR ALL REGISTERED BIDDERS ON SITE AND REGISTERED BIDDERS ON DLMS !

The consignors past and present would like to recognize and thank LARRY and FAY HAGERTY AND FAMILY from HAGERTY LIVESTOCK and JOHNSTONE AUCTION MART who have been with this sale for ALL 25 YEARS!

The bulls ration this year is 7% ground straw, 44.5% barley silage, 30% ethanol wet cake, 1% Cargill beef supplement with rumensin and nature safe and 17.5% rolled oats. Larry targets the bulls to gain an average of 3 to 3.5 lbs per day per bull. It's the large variety of sire groups from leading genetics in the industry that makes this sale unique. There is a bull to suit your needs for everyone whether for heifers, cows, or to work on both.

Contact any of the consignors and they would be happy to discuss their program and their bulls on offer.

Sale day, contact any of the T Bar C crew, Darnell Fornwall of First Class Marketing, or the consignors if you are unable to attend and need assistance.

Triple A Sales Group

FROM THE DESK AT T BAR C

Welcome to the Triple A Bull Sale on Saturday, April 9, 2022, at Johnstone Auction Mart, Moose Jaw, Saskatchewan. This year marks the 25th anniversary of this sire supplying event... and these dedicated breeders would like to share this quarter century mark with five "celebration credits of \$500.00" for their customers. Consider the amount of Angus influence which has been supplied over the years and the amount of females that are working in pastures sired by bulls from the Triple A group of producers.

The 45 black Angus bulls offer quality and uniformity throughout the pens... plenty of pay weight performance coming from the top cut of each respective operation and full of maternal power so you are guaranteed the daughters will be top cut replacements. With plenty of hair and testicle, these rugged prospects are diverse genetically offering numerous opportunities whether it be a power bull, heifer bull or one for both pastures. The Angus and Angus influenced females are bred to make wonderful replacements for any type of breeding operation.

Acquire the Angus Advantage on April 9th in Moose Jaw. The bulls will be at the sale barn the day prior or you can preview the bulls at Hagerty Livestock located 5.6 miles north of Hwy 1 on Kalium Road near Belle Plaine. Feel free to give any of these progressive producers a call... they will be pleased to chat about their offering.

Plan to be with us to celebrate the 25th Triple A anniversary whether it be in person, online or on the phone. We have graded the offering, so feel free to give any of the T Bar C team a call and we will be pleased to assist you in a professional confidential manner with your selections.

Chris Poley



Sale Management

T Bar C Cattle Co. Ltd.

Box 2330

Warman, SK S0K 4S0

Office: 306-933-4200

Fax: 306-934-0744

info@tbarc.com www.tbarc.com



Chris Poley
306-220-5006



Shane Michelson
403-363-9973



Ben Wright
519-374-3335

ACQUIRE THE ANGUS ADVANTAGE

AT THE 25TH TRIPLE "A" BULL SALE

44 YEARLING BULLS ON OFFER

PLUS COMMERCIAL HEIFERS

Lunch at 12:00 Noon • Sale at 1:00 PM • Saturday, April 9, 2022
Johnstone Auction Mart, Moose Jaw, Saskatchewan

Auctioneer

Chris Poley _____ 306-220-5006

Ringmen

Shane Michelson _____ 403-363-9973

Levi Rimke _____ 204-851-4515

Mark Stock _____ 403-357-8104

Livestock Insurance

Bonnie Thompson _____ 306-483-7311

Alameda Agencies

Sales Consultant

Darnell Fornwald _____ 403-795-8030

First Class Marketing

View the catalogue online at
www.BuyAgro.com

2021 BREED AVERAGES

	BW	WW	YW	Milk	SC	CE	MCE
BLK	2.0	51	89	23	0.81	3.6	6.8
RED	1.1	39	66	23	0.66	2.76	5.3

DEFINITIONS:

- BW – Birth Weight – all weights are measured in pounds.
- 205 – Adjusted Weaning Weight
- AOD – Age of Dam
- Proj Wt. – Estimate of Sale Day Weight

LUNCH SPONSORED BY



Meet your Triple A Consignors

Can't make it to the sale? Watch & Bid Online.

With DLMS you can Watch, Listen & Bid on your computer just like you were there with online bidding over the internet

Instructions for Viewing And Bidding At the Sale

Visit www.dlms.ca, Fill out the registration form located under registration and sign-up for your free user account to select a username and password.

BIDDERS - To be approved as a bidder, Log in and click BUYER APPROVAL tab, select the sale you are interested in bidding at and click sign up.

For more information or for help getting approved Call:

Mark Shologan - 780-699-5082 or DLMS Purebred Team 780.991-3025

Direct Livestock Marketing Systems
We're Making the Connection
DLMS
www.dlms.ca

To find an agent or sale near you today
visit www.dlms.ca

Purebred Sales • Daily Presort Sales
Direct Off-farm Sales every Thursdays at 10:00 am

TRIPLE A CONSIGNORS

Bell Angus	Ken & Sheila Bell	306-591-7792	Lots 38 - 45
Cottonwood Angus	Brett Gaube	306-537-4710	Lots 1 - 8
Hi Low Angus	Dan, Erin & Cassidy Howell	306-731-2940 cell: 306-581-7606	Lots 23 - 32
Nu-Horizon Angus	Kieran, Deb & Kodie Doetzel	306-336-2245 cell: 403-357-7648	Lots 9 - 17
Triple H Angus	Perry, Dawn & Cory Hart	306-723-4832	Lots 33 - 37
Willowview Angus	Ken & Sandy Harle	306-539-8185	Lots 18 - 22



Cottonwood Angus was one of the founding consignors and would like to welcome everyone to the 25 year anniversary of the Triple A Angus bull sale. I'm looking forward to seeing you and am always available to answer any questions.
Brett Gaube at 306-537-4710



1

1

COTTONWOOD TERRITORY 97J

Male 2230117 RTBG 97J 26/01/2021

S A V RESOURCE 1441
S A V TERRITORY 7225
S A V EMBLYNETTE 3293

S A V BISMARCK 5682
LFE BA FLORESSA 97A
REMINGTON FLORESSA 16Y

RITO 707 OF IDEAL 3407 7075
S A V BLACKCAP MAY 4136
S A V 004 DENSITY 4336
S A V EMBLYNETTE 7411
G A R GRID MAKER
S A V ABIGALE 0451
REMINGTON FINAL ANSWER 13T
JL FLORESSA 07168

Here is the real package, it's a stack genetic package with the new SAV Territory out of Resource. On the dam side, she has Bismark and goes back to Final Answer.

- Retaining 50% semen interest
- ADG 3.76lbs and WPDA 3.5lbs

EPDS	BW	WW	YW	MILK	CE	MCE
	1.6	62	111	22	9	9
BW:	ADJ WW:	Feb 14. WT:	PROJ WT:	AOD:		
82 lbs.	684 lbs.	1360 lbs.	1544 lbs.	8		

2

COTTONWOOD **TRAPPER** 70J

Male 2230119 RTBG 70J 26/01/2021

PAINTROCK MOUNTAIN MAN
PAINTROCK TRAPPER
 EMULOUS OF PAINTROCK 93-9

JCC J.D. 9C
COTTONWOOD BELLE 70E
 CFS BELLE 64N

KESSLERS FRONTMAN R001
 ENCHANTRESS OF PR 3635
 ISAACS ALLIANCE 7161
 PAINTROCK EMULOUS 446-6
 S A V INTERNATIONAL 2020
 WERNER BLACK ANGEL 1299
 GBT RANGER 3L
 CFS BELLE 45L

EPDS	BW	WW	YW	MILK	CE	MCE
	-0.2	46	74	24	6	3

BW:	ADJ WW:	Feb 14. WT:	PROJ WT:	AOD:
68 lbs.	624 lbs.	1154 lbs.	1338 lbs.	4

Here's a outcross, calving ease smooth made package ADG 2.9 WPDA 3



celebrate 25 years with us!

\$2500 worth of bull credits to
be drawn before the sale!



The KUHN Knight HP 160 ProPush® hydraulic push-type spreader is designed to haul and spread solid materials from dairies and feedlots, including gutter manure, yard scrapings, bedding pack and feedlot manure. The HP 160 features a heaped capacity of 600 ft³ (17 m³).

NICK'S
SERVICE LTD.

#2 South Plains Rd W.
Emerald Park, SK
www.nicksservice.com
 (306) 781 1077



LOTS 3-8: SIRED BY JCC JD 9C

These are the fifth set of bulls sired by JCC JD. He had an outstanding pedigree, great EPD's with tremendous feet and claws. His calves continue to exhibit the same tremendous length of body, depth, easy fleshing and moderate birth weights. JD is siring calves that are getting the job done.



3

COTTONWOOD JD 55J

Male 2220243 RTBG 55J 22/02/2021

S A V INTERNATIONAL 2020
JCC J.D. 9C
WERNER BLACK ANGEL 1299

BLAIRS NEW GENERATION 303Z
COTTONWOOD TOP EDITION 55C
COTTONWOOD TOP EDITION 11W

S A V HARVESTOR 0338
S A V EMBLYNETTE 5483
S A V NET WORTH 4200
CLEARWATER BLACK ANGEL 395
DUFF NEW GENERATION 6107
MV F TIBBIE 60M
BLACK RIDGE EDITION 2S
WILLOWVIEW TIPTOP 11N

EPDS	BW	WW	YW	MILK	CE	MCE
	3.8	53	98	25	0	4
BW: 86 lbs.	ADJ WW: 697 lbs.	Feb 14. WT: 1292 lbs.		PROJ WT: 1476 lbs.	AOD: 6	

ADG 4lb WPDA 3.6



4

COTTONWOOD JD 46J

Male 2220249 RTBG 46J 14/02/2021

S A V INTERNATIONAL 2020
JCC J.D. 9C
WERNER BLACK ANGEL 1299

BLAIRS NEW GENERATION 303Z
COTTONWOOD BELLE 46B
COTTONWOOD BELLE 82X

S A V HARVESTOR 0338
S A V EMBLYNETTE 5483
S A V NET WORTH 4200
CLEARWATER BLACK ANGEL 395
DUFF NEW GENERATION 6107
MV F TIBBIE 60M
HILLOW FIRST EDITION 1U
WILLOWVIEW BELLE 82N

EPDS	BW	WW	YW	MILK	CE	MCE
	2.8	45	80	25	2	4
BW: 84 lbs.	ADJ WW: 672 lbs.	Feb 14. WT: 1230 lbs.		PROJ WT: 1414 lbs.	AOD: 7	

ADG 3.3 WPDA 3.4



5

COTTONWOOD INTERNATIONAL 63J

Male 2220251 RTBG 63J 04/03/2021

S A V INTERNATIONAL 2020
JCC J.D. 9C
WERNER BLACK ANGEL 1299

BLAIRS NEW GENERATION 303Z
COTTONWOOD TIPTOP 63D
COTTONWOOD TIP TOP 12Y

S A V HARVESTOR 0338
S A V EMBLYNETTE 5483
S A V NET WORTH 4200
CLEARWATER BLACK ANGEL 395
DUFF NEW GENERATION 6107
MV F TIBBIE 60M
WILLOWVIEW NET WORTH 12W
WILLOWVIEW TIPTOP 21N

EPDS	BW	WW	YW	MILK	CE	MCE
	3.9	52	94	26	0	2
BW:	ADJ WW:	Feb 14. WT:	PROJ WT:	AOD:		
87 lbs.	724 lbs.	1254 lbs.	1438 lbs.	5		

ADG 3.7 WPDA 3.6

auction alert!

4 Sweet Pro Tubs up for auction

6

COTTONWOOD INTERNATIONAL 59J

Male 2220244 RTBG 59J 05/02/2021

S A V INTERNATIONAL 2020

JCC J.D. 9C

WERNER BLACK ANGEL 1299

BLAIRS NEW GENERATION 303Z

COTTONWOOD BELLE 59C

WILLOWVIEW BELLE 82N

S A V HARVESTOR 0338

S A V EMBLYNETTE 5483

S A V NET WORTH 4200

CLEARWATER BLACK ANGEL 395

DUFF NEW GENERATION 6107

MVF TIBBIE 60M

HXL STOCKMAN 2K

COTTONWOOD BELLE 11A

EPDS	BW	WW	YW	MILK	CE	MCE
	3.1	49	88	24	1	3

BW:	ADJ WW:	Feb 14. WT:	PROJ WT:	AOD:
86 lbs.	686 lbs.	1312 lbs.	1496 lbs.	6

ADG 3.9 WPDA 3.5



6

7

COTTONWOOD JD 35J

Male 2220242 RTBG 35J 02/02/2021

S A V INTERNATIONAL 2020

JCC J.D. 9C

WERNER BLACK ANGEL 1299

A-LINE DEW 1M

ROSS RIVER CHRIS 35T

ROSS RIVER CHRIS 2G

S A V HARVESTOR 0338

S A V EMBLYNETTE 5483

S A V NET WORTH 4200

CLEARWATER BLACK ANGEL 395

SANDY BAR DEW 105F

DAY BY DAY FLORA 9G

DOUBLE JJIM 303C

CARONHILL CHRIS 1'94

EPDS	BW	WW	YW	MILK	CE	MCE
	2.2	31	51	22	2	3

BW:	ADJ WW:	Feb 14. WT:	PROJ WT:	AOD:
78 lbs.	639 lbs.	1136 lbs.	1320 lbs.	14

ADG 2.8 WPDA 3



7

8

COTTONWOOD JD 24J

Male 2235346 RTBG 24J 08/04/2021

S A V INTERNATIONAL 2020

JCC J.D. 9C

WERNER BLACK ANGEL 1299

BLAIRS NEW GENERATION 303Z

COTTONWOOD ERICA 44B

SOO LINE ERICA 0190

S A V HARVESTOR 0338

S A V EMBLYNETTE 5483

S A V NET WORTH 4200

CLEARWATER BLACK ANGEL 395

DUFF NEW GENERATION 6107

MVF TIBBIE 60M

SOO LINE LEGACY 7019

SOO LINE ERICA 8334

EPDS	BW	WW	YW	MILK	CE	MCE
	2.8	49	89	25	3	4

BW:	ADJ WW:	Feb 14. WT:	PROJ WT:	AOD:
83 lbs.	726 lbs.	1150 lbs.	1334 lbs.	7

ADG 3.9 WPDA 3.7



8

LOTS
9-17

NU-HORIZON ANGUS

Kieran, Deb & Kodie Doetzel
Box 227 Lipton, SK S0G 3B0
kdknuhorizon@gmail.com

Ph: 306-336-2245
Cell: 403-357-7648
Kodie's Cell: 306-331-0384



Hello Fellow Cattleman,
Firstly, we would like to thank our bidders and buyers from past years sales having trust in our program. We strive for sound, good footed bulls to last our customers for many years. We also pay very close attention to both the dam and the sire in our program. They must have strong maternal traits and a balanced set of EPD's. We demand our cattle to have a disposition that we can work with easily. Feel free to give Kieran or Kodie a call to discuss the 2022 offering.



9 NU-HORIZON **POKER FACE** 1004J

Male 2213751 DTK 1004J 09/02/2021

VISION UNANIMOUS 1418
FRASER POKER FACE 613D
RED HOWE DYNA QUEEN 241A

RED SIX MILE TROY 243T
RED T-K MISS RAMBO 62A
RED T-K MISS RAMBO 127U

VISIONTOPLINE ROYAL STOCKMAN
VISION EDELLA 665
RED EKW LUCKY 13U
RED HOWE DYNA QUEEN 114X
RED TOWAW INDEED 104H
RED RSL SUE 400F
RED T-K AVALANCHE 8S
RED WBR MISS RAMBO 43'02

EPDS	BW	WW	YW	MILK	CE	MCE
	5.2	59	95	17	-6	3

BW: 94 lbs.	ADJ WW: 639 lbs.	Feb 14. WT: 1134 lbs.	PROJ WT: 1318 lbs.	AOD: 8
-----------------------	----------------------------	---------------------------------	------------------------------	------------------

This performance driven sire off a top producing cow. 62A was purchased from the T-K dispersal and really hit it out of the park with this guy. He was a favorite all summer and has not looked back since. Don't let his BW scare you. He's still a small headed, smooth shouldered bull that is full of hair.
Cow Bull. Sire Verified.



10 NU-HORIZON **KODIAK** 102J

Male 2213600 TK 102J 12/01/2021

SANDY BAR ADVANTAGE 43M
HF KODIAK 5R
WILBAR RUBY 955N

BROOKING BANK NOTE 4040
BROOKING RITA ROULETTE 7097
VOS VEGAS RITA ROULETTE 1B

TC ADVANTAGE
SANDY BAR JEMINA 44K
VERMILION YELLOWSTONE
WILBAR RUBY 161J
CONNEALY EARNAN 076E
E A ROSE 918
DAMERON FIRST CLASS
TRIARA RITA 228Z

EPDS	BW	WW	YW	MILK	CE	MCE
	1	49	83	16	6	7

BW: 76 lbs.	ADJ WW: 495 lbs.	Feb 14. WT: 1052 lbs.	PROJ WT: 1236 lbs.	AOD:
-----------------------	----------------------------	---------------------------------	------------------------------	-------------

Good footed and built for the long haul, this direct Kodiak son is destined to catch your eye. Then cross Kodiak with this awesome uddered Bank Note cow and you will be wanting to keep every daughter around. All while not sacrificing pounds on the steer calves in the fall.
Heifer/Cow Bull. Sire Verified.

celebrate 25 years with us!

\$2500 worth of bull credits to
be drawn before the sale!

11

NU-HORIZON **KODIAK** 107J

Male 2213606 TK 107J 17/01/2021

SANDY BAR ADVANTAGE 43M

HF KODIAK 5R

WILBAR RUBY 955N

MICH WCC CUTTING EDGE 7160E

NU-HORIZON BETSY 9038G

WRIGHTS 52 BETSY 34Y

TC ADVANTAGE

SANDY BAR JEMINA 44K

VERMILION YELLOWSTONE

WILBAR RUBY 161J

S A V CUTTING EDGE 4857

COPPER CRK LADY 1210

EGGEN FREEDOM 174P 52T

DM BETSY 24S

EPDS	BW	WW	YW	MILK	CE	MCE
	2.8	65	107	23	3	6

BW:

82 lbs.

ADJ WW:

653 lbs.

Feb 14. WT:

1182 lbs.

PROJ WT:

1366 lbs.

AOD:

2

Unmatched maternal value. If raising high quality females is your program, then this Kodiak son should be a top priority. Or better yet, keep the half brothers together and really give your replacement pen a boost. A few years ago we sold a kodiak son to Jim Hallburg (Shiney) and he has had nothing but good things to say.

Heifer/Cow Bull. Sire Verified.



11

12

NU-HORIZON **GQ** 110J

Male 2244251 TK 110J 19/01/2021

SILVEIRAS STYLE 9303

SILVEIRAS S SIS GQ 2353

K N C CABIN CREEK SANDY 804

RED BLAIRSWEST POWER UP 1B

NU-HORIZON GRANDE JUNE 9061G

SOO LINE GRANDE JUNE 1284

GAMBLES HOT ROD

SILVEIRAS ELBA 2520

B C LOOKOUT 7024

K N C CABIN CREEK SANDY

RED SOO LINE POWER EYE 161X

RED BLAIRSWEST SUGRLAND 1Z

BROCKHILL PROPHECY 4P

SOO LINE GRANDE JUNE 1714

EPDS	BW	WW	YW	MILK	CE	MCE
	2.8	51	83	21	3	7

BW:

77 lbs.

ADJ WW:

579 lbs.

Feb 14. WT:

1042 lbs.

PROJ WT:

1226 lbs.

AOD:

2

Man have we been impressed with our GQ progeny over the years. Whether it's the bulls or the females, they normally always rise to the top of their respected pen. They are always nicely made, easy to look at cattle that are full of hair. Just like with 110J.

Heifer/Cow Bull. Sire Verified.



12

13

NU-HORIZON **LOOKOUT** 114J

Male 2213592 TK 114J 21/01/2021

O C C LEGEND 616L

B C LOOKOUT 7024

GIBBET HILL MIGNONNE E37

S A V BISMARCK 5682

NU-HORIZON JILT 9019G

NU-HORIZON JILT 7047E

O C C EMBLAZON 854E

O C C BLACKBIRD 632J

PAPA EQUATOR 2928

GIBBET HILL MIGNONNE TR 29

G A R GRID MAKER

S A V ABIGALE 0451

B C LOOKOUT 7024

MERIT JILT 196X

EPDS	BW	WW	YW	MILK	CE	MCE
	4.2	57	96	20	-4	-4

BW:

88 lbs.

ADJ WW:

597 lbs.

Feb 14. WT:

1032 lbs.

PROJ WT:

1216 lbs.

AOD:

2

Lookout X Bismarck... What more could you ask for! Strong maternal lineage here. Clean fronted and smooth shouldered, 114J is sure to find some friends. His dam did a very nice job raising him and just dropped another awesome bull calf for 2022. We really love this bull's dam. If using him on heifers we recommend them to be larger framed heifers.

Cow Bull. Sire Verified.



13



14

NU-HORIZON **BLUE CHIP** 123J

Male 2213647 TK 123J 02/02/2021

DAMERON FIRST CLASS
EXAR BLUE CHIP 1877B
GREENS PRINCESS 1012

MVF PIONEER 104X
NU-HORIZON ELBA 373A
LODGE ELBA 39U

EXG RS FIRST RATE S903 R3
DAMERON NORTHERN MISS 3114
GREENS PREMIUM 7578
GREENS PRINCESS 7418
S A V PIONEER 7301
MVF ANNIE K 317U
CUDLOBE MIDLAND 21R
LODGE ELBA 13K

Be sure to find 123J in the pen. A direct Blue Chip son that is chucked full of meat and muscle. He's a long spined, big bodied sire that could definitely create an impressive set of steers come fall time. His dam has a beautiful udder and is a correct footed cow that has two sons working for Allan and Janet Nameth.
Heifer/Cow Bull. Sire Verified.

EPDS	BW	WW	YW	MILK	CE	MCE
	2.8	57	92	16	1	9
BW:	ADJ WW:	Feb 14. WT:	PROJ WT:	AOD:		
82 lbs.	565 lbs.	1106 lbs.	1290 lbs.	8		

Riverview Sausage

2.5km NW of Craven, on Highway 20

- Bison
- Wild Game Processing
- Butchering
- Smokies
- Garlic Sausage
- Smoked Garlic
- Jalapeno & Cheddar Smokies
- Maple Sausage
- Pepperettes
- Homemade Burgers

Curtis Hicks
1 306 305 9144

Riverviewsausage@gmail.com
Riverviewsausage.com

Prairie Co-operative Ltd.

For bulk deliveries, call:

MELVILLE	306.728.5811
CUPAR	306.723.1200
ITUNA	306.795.2441
KELLIHER	306.675.2156
LIPTON	306.336.2333

PETROLEUM
www.prairieco-op.crs

15

NU-HORIZON **CRANK** 138J

Male 2219749 TK 138J 12/02/2021

74-51 SUDDEN LOOK 1023

DMM CRANK 13E

DMM MISS ESSENCE 14Y

JL JOCK 9002

NU-HORIZON TIBBIE 5105C

NU-HORIZON TIBBIE 123Y

B C LOOKOUT 7024
 EXG LUCY P061 R3
 GUMBO GULCH CREED 94S
 DMM MISS ESSENCE 37T
 S A V YOUNG JOCK 6457
 S A V MADAME PRIDE 7798
 SITZ UPWARD 307R
 MVF TIBBIE 134U

EPDS	BW	WW	YW	MILK	CE	MCE
	1.6	47	96	27	6	9

BW:	ADJ WW:	Feb 14. WT:	PROJ WT:	AOD:
74 lbs.	529 lbs.	1054 lbs.	1238 lbs.	6

Big growth spread bull here. Moderate at birth but still gives performance. Just what every rancher would like. A few years ago we purchased a semen pack on Crank to get some new genetics in the sale. This mating proved to be good. The dam nails it year after year as we have retained her bulls and heifer calves. 138J has good, big feet and is as square hipped as they come. Don't miss out on this dual purpose sire.

Heifer/Cow Bull. Sire Verified.



15

16

NU-HORIZON **PRAIRIE GOLD** 151J

Male 2221130 TK 151J 24/02/2021

FF BLACK GOLD JF C19

J SQUARE S PRAIRIE GOLD 989G

J SQUARE S GEORGINA 82C

COLE CREEK CEDAR RIDGE 1V

NU-HORIZON RUBY 9001G

NU-HORIZON RUBY 7046E

CONNEALY BLACK GRANITE
 JF BARBARAMERE Y3
 SANKEYS JUSTIFIED 101
 J SQUARE S GEORGINA 90Z
 COLE CREEK BLACK CEDAR 46P
 COLE CREEK CLOVANADA 49S
 BROOKING BANK NOTE 4040
 NU-HORIZON RUBY 470B

EPDS	BW	WW	YW	MILK	CE	MCE
	2.3	59	101	23	5	4

BW:	ADJ WW:	Feb 14. WT:	PROJ WT:	AOD:
80 lbs.	599 lbs.	1068 lbs.	1252 lbs.	2

We could not be happier that we purchased Prairie Gold as a partner with Jordan Sies. 151's sire has a fantastic disposition. He has a great foot and puts muscle, depth and hair into his calves. 151J will put pounds onto your calves for fall time.

Cow Bull Sire Verified.



16

17

NU-HORIZON **KOZI** 168J

Male 2226005 TK 168J 11/03/2021

KOU PAL KOZI 418

HLC KOZI 963E

JUSTAMERE DCH 101 PRIDE 825C

MICH WCC CUTTING EDGE 7160E

NU-HORIZON DUCHESS 9082G

NU-HORIZON DUCHESS 3115A

KOU PAL KOZI 22
 KOU PAL EBONETTE 263
 SANKEYS JUSTIFIED 101
 EXAR PRIDE 3178
 S A V CUTTING EDGE 4857
 COPPER CRK LADY 1210
 MVF PIONEER 104X
 LODGE DUCHESS 25U

EPDS	BW	WW	YW	MILK	CE	MCE
	4.5	69	115	24	0	3

BW:	ADJ WW:	Feb 14. WT:	PROJ WT:	AOD:
84 lbs.	663 lbs.	1074 lbs.	1258 lbs.	2

He may be the youngest but that sure does not mean 168J is lacking any quality. He's a big nutted, big topped bull that is still flat shouldered so he will calve with ease.

His first calf Cutting Edge dam is as visually pleasing as any cow on the place with a perfect udder.

Heifer/Cow Bull. Sire Verified.



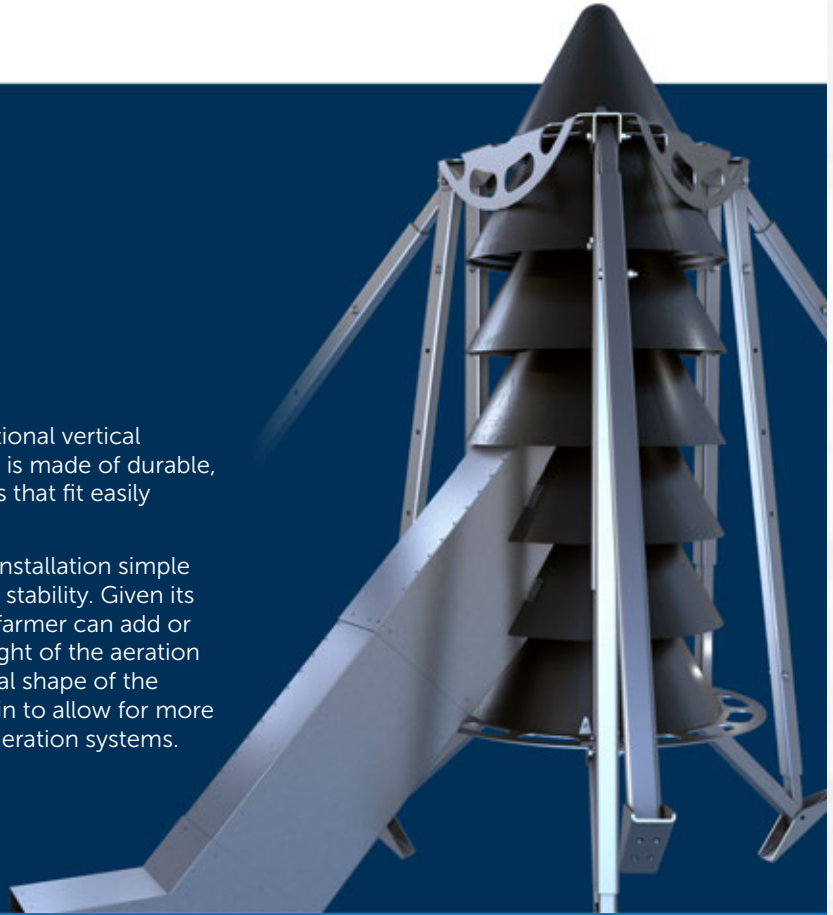
17



The world's first modular and mobile grain bin aeration system...

Designed to overcome the challenges of traditional vertical aeration systems in storage bins, UFO aeration is made of durable, light-weight, heavy-duty polymer components that fit easily through bin openings as small as 18".

The bolt-together, interlocking design makes installation simple while the steel support plates and legs provide stability. Given its modular construction and telescoping legs, a farmer can add or remove stages to increase or decrease the height of the aeration system to best suit its intended use. The conical shape of the components mirror the angle of repose of grain to allow for more than 4 times the airflow of traditional vertical aeration systems.



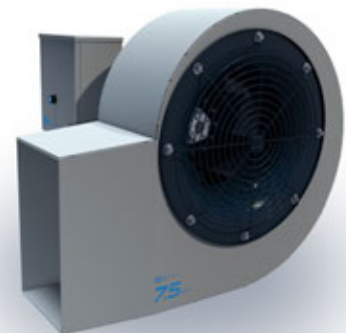
TURBOFAN



BOOSTERFAN



Centrifugal fans & blowers



**LOTS
18-22**

WILLOWVIEW ANGUS

Ken & Sandy Harle
Box 512 Regina, SK
S4P 3A3

Ph: 306-539-8185
306-359-6100
harleks@sasktel.net



Welcome to the 25th edition of this sale. We are proud to have been a part of this sale for 24 years. Thank-you to all bidders and buyers who have supported our sale over the years. Like most, our goal is to have a calf born easy and then perform like heck. The mother must be just that...a great mom. A nice udder, good feet and docile disposition are high on the list. We would love to help you find a bull that works for you.

See you sale day!

Ken, Sandy and family



18

18

WILLOWVIEW **ARMSTRONG 1J**

Male **2211290** **KSH 1J** **14/01/2021**

KR APOLLO 6458
MERIT ARMSTRONG 9035G
MERIT LADY ANN 7076E

HILOW TOUR OF DUTY 74E
WILLOWVIEW TIBBIE 8G
WILLOWVIEW TIBBIE 17E

KRAMERS APOLLO 317
KR MISS ANGUS 4309
HF UNIT 14C
MERIT LADY ANN 7158
R B TOUR OF DUTY 177
HILOW PRIDE 38W
WILLOWVIEW BIG SPLIT 19A
MV F TIBBIE 106X

This is a heifers first calf sired by our new herdsire Merit Armstrong 9035G. He is without doubt a calving ease sire. His calves are born with low-moderate birth weights and then they grow like crazy.

Adj. WW 777 lbs. with an index of 112. ADG 3.62 lbs.

EPDS	BW	WW	YW	MILK	CE	MCE
	1	57	102	30	6	8
BW:	ADJ WW:	Feb 14. WT:	PROJ WT:	AOD:		
77 lbs.	777 lbs.	1322 lbs.	1503 lbs.			

LOTS 19-22: SIRED BY LODGE FORTITUDE 13C

These bulls are sired by Lodge Fortitude 13C. He has consistently sired great bull calves as well as many of our replacement heifers. Lots 20 and 22 indexed at 109 and both have an Adj. WW of 715. Lot 19 indexed at 102 with Adj. WW of 670. ADG for these guys ranged from 3.52 to a high of 4.30 on Lot 20. You will notice Lot 21 came in lighter. Due to a freak accident to the dam this calf was orphaned at 3 months of age. From mid April he seemed content to be with the herd so we just let him be. Whatever gains he made through the spring and summer he did on his own and came off pasture at the beginning of October weighing 688 lbs. His Tiptop mother was a great producing Pioneer daughter.



19

19

WILLOWVIEW **FORTITUDE** 22J

Male 2216973 KSH 22J 04/02/2021

PA FORTITUDE 2500
LODGE FORTITUDE 13C
LODGE QUALITY LASS 31Y

WILLOWVIEW BIG SPLIT 19A
WILLOWVIEW PEARL 10D
WILLOWVIEW PEARL 2Z

GAR-EGL PROTÉGÉ
G G CLARA 0171
MOHNEN DYNAMITE 1356
LODGE QUALITY LASS 32T
RING CREEK BIG SPLIT 11Y
BLACK RIDGE GAMMER 23Y
S A V PIONEER 7301
WILLOWVIEW PEARL 43P

EPDS	BW	WW	YW	MILK	CE	MCE
	1.2	47	89	22	5	10
BW:	ADJ WW:	Feb 14. WT:	PROJ WT:	AOD:		
85 lbs.	670 lbs.	1240 lbs.	1424 lbs.	5		

20

WILLOWVIEW **FORTITUDE** 14J

Male 2213414 KSH 14J 26/01/2021

PA FORTITUDE 2500
LODGE FORTITUDE 13C
LODGE QUALITY LASS 31Y

WILLOWVIEW BIG SPLIT 19A
WILLOWVIEW PEARL 31E
WILLOWVIEW PEARL 43P

GAR-EGL PROTÉGÉ
G G CLARA 0171
MOHNEN DYNAMITE 1356
LODGE QUALITY LASS 32T
RING CREEK BIG SPLIT 11Y
BLACK RIDGE GAMMER 23Y
COTTONWOOD STOCKMAN 60M
COTTONWOOD PEARL 62K

EPDS	BW	WW	YW	MILK	CE	MCE
	2.9	50	92	23	0	7
BW:	ADJ WW:	Feb 14. WT:	PROJ WT:	AOD:		
90 lbs.	715 lbs.	1342 lbs.	1526 lbs.	4		



20

PRAIRIE AG PETROLEUM LTD.

210 McDonald St. N.
Regina, Sask. S4N 5W3
Tel: (306) 721-6880
Fax: (306) 721-3748



Husky

Bulk Fuel, Cardlock, Lubes, Baler Twine

EARL GREY

VETERINARY SERVICES

Dr. Justin Kristjansson

Dr. Samantha Tetlock



• Bovine • Equine • Small Ruminant • Pets

Find us on Facebook & Instagram!

109 Assiniboia Avenue
Earl Grey, SK S0G 1J0
T: (306) 939-2264
myegvets@sasktel.net

21

WILLOWVIEW FORTITUDE 3J

Male 2211291 KSH 3J 18/01/2021

PA FORTITUDE 2500
LODGE FORTITUDE 13C
 LODGE QUALITY LASS 31Y

S A V PIONEER 7301
WILLOWVIEW TIPTOP 4X
 COTTONWOOD TIPTOP 12K

GAR-EGL PROTÉGÉ
 G G CLARA 0171
 MOHNEN DYNAMITE 1356
 LODGE QUALITY LASS 32T
 S A V FINAL ANSWER 0035
 S A V BLACKBIRD 5297
 KENOSEE PARK 473 29G
 COTTONWOOD TIPTOP 93C

EPDS	BW	WW	YW	MILK	CE	MCE
	1.9	44	83	19	2	9
BW: 84 lbs.	ADJ WW: 613 lbs.	Feb 14. WT: 1086 lbs.	PROJ WT: 1270 lbs.	AOD: 11		



21

22

WILLOWVIEW FORTITUDE 28J

Male 2216975 KSH 28J 07/02/2021

PA FORTITUDE 2500
LODGE FORTITUDE 13C
 LODGE QUALITY LASS 31Y

WILLOWVIEW BIG SPLIT 19A
WILLOWVIEW PRIDE 4C
 WILLOWVIEW PRIDE 7A

GAR-EGL PROTÉGÉ
 G G CLARA 0171
 MOHNEN DYNAMITE 1356
 LODGE QUALITY LASS 32T
 RING CREEK BIG SPLIT 11Y
 BLACK RIDGE GAMMER 23Y
 S A V POTENTIAL 0205
 WILLOWVIEW PRIDE 3N

EPDS	BW	WW	YW	MILK	CE	MCE
	1.8	52	97	21	3	9
BW: 87 lbs.	ADJ WW: 715 lbs.	Feb 14. WT: 1344 lbs.	PROJ WT: 1528 lbs.	AOD: 6		



22



**THIS HIRED HAND
 NEVER QUILS.**

You never quit, and you need equipment that works as hard as you do.
 That's why the 324L wheel loader is the best fit for your farm.

More Power

This compact loader delivers big results, with a four-cylinder turbo-diesel engine for exceptional power without compromise.

More Agility

High speeds and tight turns, this loader can handle it all with a 23 MPH top speed and Articulation Plus™ steering system.

More Uptime

With 56 locations across the country for parts, and 24/7/365 service, no one works harder to keep you running than Brandt.

brandt.ca | 1-888-227-2638



Brandt

LOTS
23-32

HI LOW ANGUS

Dan, Erin & Cassidy Howell
Box 30, RR 1, Lumsden, SK

Ph: 306-731-2940
Cell: 306-581-7606

S0G 3C0 hilowangus@sasktel.net



Welcome to the 25th Triple A Angus sale. Hi Low Angus is proud to have been a part of all the sales. To all who have supported our program over the years it has been a privilege to breed the bulls that you feel will work best in your program. The bulls offered this year emphasize calving ease with above average performance. I look forward to discuss any bull needs for the upcoming seasons.
Dan 306-581-7606



23

23

HI LOW **ARMANDO** 3J

Male 2217790 HTD 3J 24/01/2021

S A V BRAND NAME 9115
WHITESTONE ARMANDO A074
RAYBAR RITA 60-935

MOHNEN IMPRESSIVE 1093
HI LOW PRIDE 47F
HILOW PRIDE 17C

S A V BISMARCK 5682
S A V BLACKCAP MAY 5530
G A R PREDESTINED
TOEBBEN RITA 3151
BASIN EXCITEMENT
MOHNEN JILT 787
MOHNEN SOUTH DAKOTA 402
HILOW PRIDE 62U

EPDS	BW	WW	YW	MILK	CE	MCE
	4	64	99	19	1	5
	BW: 89 lbs.	Feb 14. WT: 1348 lbs.	PROJ WT: 1532 lbs.	AOD: 3		

- Gestation 276 days
- Actual weaning weight October 8 – 835 lbs
- Post weaning gain 3.94 lbs/day
- 3J is clean fronted, deep bull with a tight sheath.



24

24

HI LOW **ARMANDO** 14J

Male 2238669 HTD 14J 29/01/2021

S A V BRAND NAME 9115
WHITESTONE ARMANDO A074
RAYBAR RITA 60-935

PEAK DOT EASY DECISION 114C
HI LOW LADY ANN 35E
HI LOW LADY ANN 71C

S A V BISMARCK 5682
S A V BLACKCAP MAY 5530
G A R PREDESTINED
TOEBBEN RITA 3151
BUSHS EASY DECISION 98
PEAK DOT LADY 810A
HILOW TIGER 1X
HILOW LADY ANN 43T

EPDS	BW	WW	YW	MILK	CE	MCE
	2.7	59	94	22	5	7.5
	BW: 78 lbs.	Feb 14. WT: 1342 lbs.	PROJ WT: 1526 lbs.	AOD: 4		

- Gestation 274 days
 - Actual weaning weight October 8 - 840 lbs
 - Post weaning gain 3.86 lbs/day
 - There is not much difference between these paternal brothers Lot 23 and 24.
- Whitestone Armando is a S A V Brand Name son. You can expect progeny with above average weaning weight, yearling weight and scrotal development. Daughters are moderate framed, broody females.

celebrate 25 years with us!

\$2500 worth of bull credits to
be drawn before the sale!

25

HI LOW **ROUGH RIDER** 39J

Male 2238561 HTD 39J 18/02/2021

ELLINGSON ROUGH RIDER 4202
PEAK DOT ROUGH RIDER 2063G
 PEAK DOT BARDOLIA 482B

KG SOLUTION 0018
HI LOW ROSEBUD 3F
 HI LOW ROSEBUD 140C

CONNEALY EARNAN 076E
 EA BLACKLASS 8914
 PEAK DOT BOLD 204U
 BARDOLIA OF PEAK DOT 624U
 MOGCK SURE SHOT
 KG RITO LADY 8724
 PEAK DOT ELIMINATOR 396Z
 HILOW ROSEBUD 7A

EPDS	BW	WW	YW	MILK	CE	MCE
	1.7	62	111	21	3	7
BW: 85 lbs.		Feb 14. WT: 1272 lbs.		PROJ WT: 1456 lbs.		AOD: 3

- Gestation 279 days
- Actual weaning weight October 8 – 750 lbs
- Post weaning gain 4 lbs/day

Dam is sired by Kg Solution 0018. He is a calving ease sire. We have a number of impressive Kg Solution daughters. Dam is co-owned with Lindsay Curtis.

I was fortunate to be able to partner up with Caragata Ranch to buy Peak Dot Rough rider 2063G. The bull is a moderate framed, big butted, excellent muscled rascal. At 12 months of age he had testicular development of 41 cm.



25

26

HI LOW **ROUGH RIDER** 49J

Male 2234961 HTD 49J 24/02/2021

ELLINGSON ROUGH RIDER 4202
PEAK DOT ROUGH RIDER 2063G
 PEAK DOT BARDOLIA 482B

BASIN EXCITEMENT
HI LOW PRIDE 5D
 HI LOW PRIDE 33Z

CONNEALY EARNAN 076E
 EA BLACKLASS 8914
 PEAK DOT BOLD 204U
 BARDOLIA OF PEAK DOT 624U
 BASIN EXPEDITION R156
 BASIN LADY S532 AK
 FLEURY BARDOLINE 32X
 HILOW PRIDE 21U

EPDS	BW	WW	YW	MILK	CE	MCE
	1.7	55	94	22	5	8
BW: 85 lbs.		Feb 14. WT: 1174 lbs.		PROJ WT: 1358 lbs.		AOD: 5

- Gestation 280 days
- Actual weaning weight October 8 – 705 lbs
- Post weaning gain 3.6 lbs/day

Maternal brother sold to Keep Ranch, maternal sister retained in herd.

Only a small sample size of Roughriders for us to offer this year. We will have a larger group next year.



26

28

HI LOW **BRAVO** 33J

Male 2221685 HTD 33J 12/02/2021

COLEMAN CHARLO 0256
COLEMAN BRAVO 6313
 COLEMAN DONNA 714

BASIN EXCITEMENT
HILOW PRIDE 33C
 HILOW PRIDE 23X

O C C PAXTON 730P
 BOHI ABIGALE 6014
 CONNEALY ONWARD
 COLEMAN DONNA 386
 BASIN EXPEDITION R156
 BASIN LADY S532 AK
 HILOW FIRST EDITION 1U
 HILOW PRIDE 4K

EPDS	BW	WW	YW	MILK	CE	MCE
	-1.5	46	85	23	15	11
	BW: 74 lbs.	Feb 14. WT: 1308 lbs.		PROJ WT: 1492 lbs.		AOD: 6

- Gestation 275 days
- Actual weaning weight October 8 - 785 lbs
- Post weaning gain 4 lbs/day

Our feature calving ease bull, the dam consistently calves with a shorter gestation. Average birthweight on 5 sons was 74 lbs. Maternal brothers have sold to Rocky Lake Ranch, Cory Danyliw, Kenosha Park Ranch and we have retained 1 son.



28



29

HI LOW **BRAVO** 43J

Male 2221690 HTD 43J 20/02/2021

COLEMAN CHARLO 0256
COLEMAN BRAVO 6313
COLEMAN DONNA 714

KG SOLUTION 0018
HILOW PRIDE 4F
HILOW PRIDE 124C

O C C PAXTON 730P
BOHI ABIGALE 6014
CONNEALY ONWARD
COLEMAN DONNA 386
MOGCK SURE SHOT
KG RITO LADY 8724
HILOW TIGER 1X
HILOW PRIDE 12N

EPDS	BW	WW	YW	MILK	CE	MCE
	-0.4	53	97	23	12	8
BW: 75 lbs.		Feb 14. WT: 1176 lbs.		PROJ WT: 1360 lbs.		AOD: 3

- Gestation 280 days
- Actual weaning weight October 8 – 679 lbs
- Post weaning gain 3.8 lbs/day
- A calving ease combination of Bravo/ Kg Solution 0018
- A maternal brother sold to Chris Henfrey.



30

HI LOW **BRAVO** 52J

Male 2228208 HTD 52J 25/02/2021

COLEMAN CHARLO 0256
COLEMAN BRAVO 6313
COLEMAN DONNA 714

HILOW TIGER 12Y
HILOW LADY ANN 52B
HILOW LADY ANN 43T

O C C PAXTON 730P
BOHI ABIGALE 6014
CONNEALY ONWARD
COLEMAN DONNA 386
HF TIGER 5T
BAR-E-L MARG 55U
PEAK DOT NEW TREND 74M
HILOW LADY ANN 20M

EPDS	BW	WW	YW	MILK	CE	MCE
	0.4	50	89	22	10	7
BW: 81 lbs.		Feb 14. WT: 1246 lbs.		PROJ WT: 1430 lbs.		AOD: 7

- Gestation 281 days
 - Actual weaning weight October 8 – 712 lbs
 - Post weaning gain 4.1 lbs/day
 - A calving ease combination of Bravo/ Hi Low Tiger 12Y
- Bravo is top 1% of the breed for calving ease and docility and combines this with above average weaning and yearling performance.



31

HI LOW **TEX** 22J

Male 2217798 HTD 22J 04/02/2021

BASIN PAYWEIGHT 1682
TEX PLAYBOOK 5437
RITA 1C43 OF 9M26 COMPLETE

HILOW TIGER 1X
HILOW PRIDE 124C
HILOW PRIDE 12N

BASIN PAYWEIGHT 006S
21AR O LASS 7017
SUMMITCREST COMPLETE 1P55
RITA 9M26 OF RITA 5F56
HF TIGER 5T
MVF TIBBIE 108U
ISLA BANK TITAN 148
HILOW PRIDE 24H

EPDS	BW	WW	YW	MILK	CE	MCE
	0.6	46	83	29	8	11
BW: 80 lbs.		Feb 14. WT: 1194 lbs.		PROJ WT: 1378 lbs.		AOD: 6

- Gestation 282 days
- Actual weaning weight October 8 – 740 lbs
- Post weaning gain 3.5 lbs/day
- A calving ease combination of Tex Playbook/ Hi Low Tiger 1X
- We are using a Tex Playbook son. The calves are born easy and are very lively.
- Maternal brother sold to Lyle Sandercock.



32

32

HI LOW **SOLLUTION** 42J

Male 2221689 HTD 42J 19/02/2021

MOGCK SURE SHOT
KG SOLUTION 0018
KG RITO LADY 8724

HILOW EXCITEMENT 9C
HI LOW BLOSSOM 6E
HILOW BLOSSOM 23Y

MYTTY IN FOCUS
MOGCK BLACK LASS 2065
KG ONWARD 6221
KG RITO LADY 8187
BASIN EXCITEMENT
HILOW BLOSSOM 20X
ISLA BANK WIDESPREAD 48T
HILOW BLOSSOM 7U

- Gestation 279 days
- Actual weaning weight October 8 – 780 lbs
- Post weaning gain 3.67 lbs/day
- A direct son of the calving ease sire KG Solution 0018. Unfortunately his semen is no longer available.
- Dam has one heifer retained and a son sold to Rocky Lake Ranch.

EPDS	BW	WW	YW	MILK	CE	MCE
	0.7	61	110	23	5	7
	BW: 83 lbs.	Feb 14. WT: 1258 lbs.	PROJ WT: 1442 lbs.	AOD: 4		



SMS
MANUFACTURING
CUSTOM-BUILT MOBILE
GRAIN CLEANERS

Scott Macknak
Owner

Box 153
Dysart, SK
S0G 1H0

P: 306-432-2003
C: 306-332-7140
F: 306-432-2004
E: sms@sasktel.net

www.smsmanufacturing.ca



Leroy Steinhubl

Select Sires & Semex
Beef Representative
Nitrogen, Supplies & A.I. Breeding Services
Cell: 306-536-1784
Email: leroy_steinhubl@outlook.com
Box 157 Balgonie, SK S0G 0E0



Welcome to this years Triple A Bull Sale from all of us at Triple H. This is definitely our best set of Black Angus Bulls to date and we look forward to discussing our offering with you. We would also like to take this opportunity to thank all of the past bidders and buyers for their support.



33

TRIPLE H **NO DOUBT** 95J

Male 2230390 HRA 95J 09/03/2021

HOOVER NO DOUBT
PEAK DOT NO DOUBT 307F
PEAK DOT BARBARA 7C

MEADOW RIDGE TOUGH OAK
MEADOW RIDGE DESIGN HAG
MEADOW RIDGE DESIGN GLORIA

MOGCK BULLSEYE
MISS BLACKCAP ELLSTON J2
BUSHES EASY DECISION 98
BARBARA OF PEAK DOT 880Y
SYDGEN C C & 7
MEADOW RIDGE OAKLEAF
S CHISUM 6175
MEADOW RIDGE HANSEL

EPDS	BW	WW	YW	MILK	CE	MCE
	2	61	108	21	4	13
BW:	ADJ WW:	Feb 14. WT:	PROJ WT:	AOD:		
80 lbs.	784 lbs.	1270 lbs.	1454 lbs.	6		

Outstanding performance and consistency in these sons of No Doubt 307F (Hoover No Doubt x Bush Easy Decision). This year 13 out of 16 sons made it to the bull pen. The 5 sons of 307F in the Sale were born between Feb.14 to Mar.9th and have an average projected Sale Day Wt. of 1541 lbs. HRA 95J is the youngest bull, with an 80 lb. BWT and a 205 WT of 784 lbs. This smooth made rascal will sire some top gaining calves and will work on cows or larger heifers. His Dam 85C traces back to Syndgen CC & 7 and Chisum 6175. She has raised 3 bulls and we have 1 daughter in the herd. Epd's: Top 15% wwt, Top 15% ywt



34

TRIPLE H **NO DOUBT** 27J

Male 2230300 HRA 27J 14/02/2021

HOOVER NO DOUBT
PEAK DOT NO DOUBT 307F
PEAK DOT BARBARA 7C

S A V MUSTANG 9134
F V MUSTANG ANNIE 208Z
F V QUEEN ANNIE K 33W

MOGCK BULLSEYE
MISS BLACKCAP ELLSTON J2
BUSHES EASY DECISION 98
BARBARA OF PEAK DOT 880Y
S A V FINAL ANSWER 0035
S A V EMBLYNETTE 7415
F V 20K KING 308M
F V 184K ANNIE K 465S

EPDS	BW	WW	YW	MILK	CE	MCE
	4.1	55	105	24	1	11
BW:	ADJ WW:	Feb 14. WT:	PROJ WT:	AOD:		
94 lbs.	723 lbs.	1344 lbs.	1528 lbs.	9		

No Doubt 27J is out of one of our best Black Angus cows, a SAV Mustang (Final Answer son) daughter. When you talk about consistency, this will be the 5th bull that she has produced and we've sold 2 daughters to Purebred herds, LCL Angus in Alberta and Crossing Angus in Manitoba. Two bulls have sold at this Sale, one to Kool Spring Ranch and one to Corey & Jen Senft. HRA 27J is a thick made deep ribbed tank of a bull, his calves will push the scales down in fall. With an average daily gain of 3.84 lbs/day he will weigh over 1500 lbs by Sale Day.

Epd's: Top 35% wwt, Top 20% ywt



35

TRIPLE H **NO DOUBT** 50J

Male 2230410 HRA 50J 22/02/2021

HOOVER NO DOUBT
PEAK DOT NO DOUBT 307F
PEAK DOT BARBARA 7C

GTA BLACK UP 93A
TRIPLE H LINDA 25C
IVANHOE LINDA 20A

MOGCK BULLSEYE
MISS BLACKCAP ELLSTON J2
BUSHES EASY DECISION 98
BARBARA OF PEAK DOT 880Y
SITZ UPWARD 307R
BLACK GTA 54X
YOUNG DALE EDGAR 43X
IVANHOE LINDA 31X

EPDS	BW	WW	YW	MILK	CE	MCE
	4.5	74	137	25	-1	10
BW:	ADJ WW:	Feb 14. WT:	PROJ WT:	AOD:		
92 lbs.	872 lbs.	1524 lbs.	1708 lbs.	6		

WOW! Amazing performance in this No Doubt 307F son. He was born Feb 22nd, came off of mom on Oct. 12th at 946 lbs. (205 WT 872) and weighed 1524 lbs on Feb. 14th. (YWT 1569) for a WPDA of 4.36 lbs. At his current daily gain of 3.68 lbs/day, he should weigh over 1700 lbs on Sale day. His Dam HRA 25C is a tank of a cow with a perfect udder. She goes back to Sitz Upwards 307R and this is her second outstanding son. Her 1st was HRA 11E who was the Sire of our high selling bull last year at this Sale to JAS Angus in Manitoba. Long as a freight train, deep bodied, square made and good footed best describe this brute. This is definitely the best bull that we have ever raised and it has been a pleasure to watch him grow.

- We would like to retain an in herd semen use in this Bull at our expense and the buyers convenience.
- Epd's Top 2% WWT. Top 1% YWT

CLAYTON CURTIS

Assistant General Manager

ccurtis@masterfeeds.com

DIRECT 306-790-5557 | CELL 306-539-9486

745 Park Street, Regina, Saskatchewan S4N 4Y4

PHONE 306-721-2727 | FAX 306-721-3141

A division of  **Masterfeeds**
an Altech company

CUSTOM CORRAL CLEANING AOK CONTRACTING LTD.

Locally owned and operated business. Reasonable Rates. Great Service. Call now to book.

Call Ken at (306) 897-3309

AOK CONTRACTING LTD.

Box 47 TROSSACHS, SK S0C2N0

email: AOKCONTRACTING@LIVE.COM



Hoover No Doubt: Grandsire of lots 33-37

36

TRIPLE H **NO DOUBT** 77J

Male 2230377 HRA 77J 03/03/2021

HOOVER NO DOUBT
PEAK DOT NO DOUBT 307F
PEAK DOT BARBARA 7C

B P F SPECIAL FOCUS 504
TRIPLE H PIONEER ANNIE 41B
F V PIONEER ANNIE K 276Z

MOGCK BULLSEYE
MISS BLACKCAP ELLSTON J2
BUSHES EASY DECISION 98
BARBARA OF PEAK DOT 880Y
MYTTY IN FOCUS
B P F BLACK CASH 341
S A V PIONEER 7301
F V ANNIE K NW 685W

EPDS	BW	WW	YW	MILK	CE	MCE
	2.6	63	113	23	4	12
BW:	ADJ WW:	Feb 14. WT:	PROJ WT:	AOD:		
87 lbs.	798 lbs.	1310 lbs.	1494 lbs.	7		

Another outstanding No Doubt 307F son. His Dam HRA 41B is a Special Focus x Pioneer combination. This will be her second son to sell and we sold a daughter to Willowside Angus in Ontario and retained 1 in our herd. HRA 77J was also one of those calves that caught your eye when touring the pasture, square made, long spined with that Herd Bull look. He will add some frame to his calves and you'll want to keep his heifers.
Top 10% WWT, Top 10% YWT



37

TRIPLE H **NO DOUBT** 32J

Male 2230317 HRA 32J 16/02/2021

HOOVER NO DOUBT
PEAK DOT NO DOUBT 307F
PEAK DOT BARBARA 7C

B P F SPECIAL FOCUS 504
TRIPLE H QUEEN ERICA 8B
F V QUEEN ERICA FA 294Z

MOGCK BULLSEYE
MISS BLACKCAP ELLSTON J2
BUSHES EASY DECISION 98
BARBARA OF PEAK DOT 880Y
MYTTY IN FOCUS
B P F BLACK CASH 341
S A V FINAL ANSWER 0035
F V QUEEN ERICA 765W

EPDS	BW	WW	YW	MILK	CE	MCE
	1.4	63	108	22	7	14
BW:	ADJ WW:	Feb 14. WT:	PROJ WT:	AOD:		
83 lbs.	804 lbs.	1356 lbs.	1540 lbs.	7		

Here's a No Doubt 307F son with some performance that could be used in the heifer pen. He's a little short on ears but not on quality. His Dam HRA 8B is a Special Focus x Final Answer combination and she raised the High selling bull in the 2020 Triple A Sale going to Danny Thomas and Mark Beutler at Whitewood. This will be her 3rd bull to sell and we have 1 daughter in our herd. HRA 32J started off at 83 lbs on Feb 16th, came off mom on Oct 12th at 890 lbs (205 WT 804) and weighed 1052 lbs on Nov 5th for a WPDA of 4.01 lbs. At his current rate of gain, this tank of a bull should weigh over 1500 lbs by Sale Day. Here's a calving ease bull with tons of performance.
EPD's: Top 1 % MCE, Top 25% CE, Top 10% WWT and Top 15% YWT

auction alert!

4 Sweet Pro Tubs up for auction

SUPPLEMENT WITH THE **BEST.**



Enhanced Digestibility • Higher Plane of Herd Health • Improved Performance
Controlled Consumption • Quicker Breed Back • Boost Bull and Cow Fertility
Minimize Animal Stress • Stronger Immune System • Better Conception Rates



Contact your local dealer today!

Earl Grey Vet
Justin Kristjansson
(306) 939-2264

Kattle Kountry
Les Eastmond
(306) 630-6225

Bulyea Co-op
Brian Gorrill
(306) 725-4931

Redcoat Ag Inc
Pangman, SK
Doug Lewgood
(306) 442-7400

www.OLSTUBS.com

LOTS
38-45

BELL ANGUS

Kenneth & Sheila Bell
Box 27 Pense, SK S0G 3W0
ken.bell@sasktel.net

Ph: 306-345-2052
Cell: 306-591-7792



Welcome to the 25th Annual Triple A Bull Sale. We are offering 8 bulls in the sale, 6 of them are sons of bulls we chose to use in our AI program and 2 are by a home-raised herd sire. We feel they are suitable for both cows and heifers. Thank you to past buyers and we look forward to seeing you at this year's sale.



38

BELL **ATTRACTIVE** 7J

Male 2223858 SJB 7J 01/02/2021

JMB TRACTION 292
SCHIEFELBEIN ATTRACTIVE 4565
FROSTY ANSWER 3979

NORTHERN VIEW EFFECTIVE 88B
BELL BLACK LUCY 14D
HI LOW BLACK LUCY 14Z

SITZ TOP GAME 561X
JMB EMULOTA 013
S A V FINAL ANSWER 0035
FROSTY ELBA LIZZY 1106
SCHIEFELBEIN EFFECTIVE 61
NORTHERN VIEW TIBBIE 83T
MOHNEN DYNAMITE 1356
BELL BLACK LUCY 25P

EPDS	BW	WW	YW	MILK	CE	MCE
	2.2	66	118	24	4	6
BW: 85 lbs.	ADJ WW: 682 lbs.		Feb 14. WT: 1224 lbs.		PROJ WT: 1408 lbs.	AOD: 5

A long bodied, hairy bull by Schiefelbein Attractive 4565. His dam is a hardworking, functional cow by Northern View Effective 88B. We used 88B in our herd for 5 years with excellent results.



39

JASON BELL **ATTRACTIVE** 8J

Male 2223862 BJD 8J 02/02/2021

JMB TRACTION 292
SCHIEFELBEIN ATTRACTIVE 4565
FROSTY ANSWER 3979

S WHITLOCK 179
JASON BELL PRIDE 11F
HLC 1220 PRIDE 263A

SITZ TOP GAME 561X
JMB EMULOTA 013
S A V FINAL ANSWER 0035
FROSTY ELBA LIZZY 1106
S CHISUM 6175
S PRIDE ANNA 709
JL WARDEN 1220
DOUBLE D 126 PRIDE 3R

EPDS	BW	WW	YW	MILK	CE	MCE
	0	74	134	30	10	10
BW: 70 lbs.	ADJ WW: 734 lbs.	Feb 14. WT: 1364 lbs.	PROJ WT: 1548 lbs.	AOD: 3		

Another impressive Attractive 4565 son. His dam is a good uddered, long bodied S Whitlock 179 daughter. 8J arrived with a 70 lb BW. He should work well on heifers.

40

BELL **GOOD TIMES** 11J

Male 2223851 NBK 11J 04/02/2021

BRUIN BREAKING NEWS 2201
BELL BREAKING NEW 9F
 BELL BLACK LUCY 16W

NORTHERN VIEW RIP 17D
BELL EUGENIE ERICA 40F
 BELL EUGENIE ERICA 54T

BRUIN UPROAR 0070
 BRUIN 5050 PRINCESS 9401
 MOHNNEN DYNAMITE 1356
 BELL BLACK LUCY 5R
 WINDY WILLOWS BOOMER 98B
 SKYEBROOK PRIDE DOLLY 13B
 NORTHERN VIEW QUANTUM 86P
 BELL EUGENIE ERICA 34R

EPDS	BW	WW	YW	MILK	CE	MCE
	3.3	49	85	25	-1	6
BW:	ADJ WW:	Feb 14. WT:	PROJ WT:	AOD:		
86 lbs.	679 lbs.	1218 lbs.	1402 lbs.	3		

A stout made son of our walking herd sire Bell Good News 9F, a bull we own in partnership with Northern View Angus. His dam is a good uddered, easy keeping cow.



41

BELL **RAINFALL** 12J

Male 2223836 NBK 12J 04/02/2021

COLEMAN CHARLO 0256
S A V RAINFALL 6846
 S A V BLACKCAP MAY 4136

WILLOWVIEW PIONEER 6X
BELL BLACK LUCY 9Z
 BELL BLACK LUCY 16W

O C C PAXTON 730P
 BOHI ABIGALE 6014
 S A V 8180 TRAVELER 004
 S A V MAY 2397
 S A V PIONEER 7301
 WILLOWVIEW GRAND JUNE 36P
 MOHNNEN DYNAMITE 1356
 BELL BLACK LUCY 5R

EPDS	BW	WW	YW	MILK	CE	MCE
	-0.4	44	83	23	9	10
BW:	ADJ WW:	Feb 14. WT:	PROJ WT:	AOD:		
75 lbs.	629 lbs.	1254 lbs.	1438 lbs.	9		

A deep bodied, thick made S A V Rainfall son. Just a 75 lb BW, should work well on heifers.



YOUNGS.CA



**YOUNG'S
EQUIPMENT**

CASE II

AGRICULTURE



LEADING THE WAY IN A **THRIVING** AGRICULTURAL COMMUNITY!



42

BELL **RAINFALL** 19J

Male 2223835 NBK 19J 07/02/2021

COLEMAN CHARLO 0256
S A V RAINFALL 6846
 S A V BLACKCAP MAY 4136

BELL RIBSTONE 53U
BELL BLACK LUCY 27Y
 BELL BLACK LUCY 16W

O C C PAXTON 730P
 BOHI ABIGALE 6014
 S A V 8180 TRAVELER 004
 S A V MAY 2397
 GH RIBSTONE 81P
 IVANHOE ROYAL PRIDE 7S
 MOHNEN DYNAMITE 1356
 BELL BLACK LUCY 5R

Long, deep bodied S A V Rainfall bull with quiet disposition. His dam has been a top producer over the years. The good ones get old too soon.

EPDS	BW	WW	YW	MILK	CE	MCE
	1.7	59	104	30	2	3
BW: 86 lbs.	ADJ WW: 736 lbs.	Feb 14. WT: 1424 lbs.	PROJ WT: 1608 lbs.	AOD: 10		

celebrate 25 years with us!

\$2500 worth of bull credits to
 be drawn before the sale!

43

BELL **RAINFALL** 20J

Male 2223837 NBK 20J 10/02/2021

COLEMAN CHARLO 0256
S A V RAINFALL 6846
 S A V BLACKCAP MAY 4136

NORTHERN VIEW UPWARD 92Y
BELL QUEEN 44A
 BELL C L QUEEN 2U

O C C PAXTON 730P
 BOHI ABIGALE 6014
 S A V 8180 TRAVELER 004
 S A V MAY 2397
 SITZ UPWARD 307R
 NORTHERN VIEW EILEENMERE 89R
 CONNEALY LEAD ON
 BELL QUEEN 15N

EPDS	BW	WW	YW	MILK	CE	MCE
	-1	42	80	26	11	9
BW:	ADJ WW:	Feb 14. WT:	PROJ WT:	AOD:		
74 lbs.	655 lbs.	1212 lbs.	1396 lbs.	8		

Another light birth weight S A V Rainfall son out of a hard-working Northern View Upward 92Y daughter. Very smooth made bull.



43

44

BELL **ATTRACTIVE** 22J

Male 2223853 NBK 22J 11/02/2021

JMB TRACTION 292
SCHIEFELBEIN ATTRACTIVE 4565
 FROSTY ANSWER 3979

NORTHERN VIEW RIP 17D
BELL BLACKLASS 42F
 BELL BLACKLASS 20X

SITZ TOP GAME 561X
 JMB EMULOTA 013
 S A V FINAL ANSWER 0035
 FROSTY ELBA LIZZY 1106
 WINDY WILLOWS BOOMER 98B
 SKYEBROOK PRIDE DOLLY 13B
 HILLOW TITAN 13P
 BELL BLACKLASS 17P

EPDS	BW	WW	YW	MILK	CE	MCE
	2.9	66	116	30	2	5
BW:	ADJ WW:	Feb 14. WT:	PROJ WT:	AOD:		
82 lbs.	751 lbs.	1316 lbs.	1500 lbs.	3		

An eye catching, long spined Schiefelbein Attractive son. Dam is a good producing cow. 22J should work well on cows or heifers.



44

45

BELL **GOOD NEWS** 36J

Male 2223856 NBK 36J 21/02/2021

BRUIN BREAKING NEWS 2201
BELL BREAKING NEW 9F
 BELL BLACK LUCY 16W

NORTHERN VIEW RIP 17D
BELL EUGENIE ERICA 26G
 BELL EUGENIE ERICA 33Y

BRUIN UPPOAR 0070
 BRUIN 5050 PRINCESS 9401
 MOHNEN DYNAMITE 1356
 BELL BLACK LUCY 5R
 WINDY WILLOWS BOOMER 98B
 SKYEBROOK PRIDE DOLLY 13B
 BELL NET RETURN 3U
 BELL EUGENIE ERICA 24T

EPDS	BW	WW	YW	MILK	CE	MCE
	4.7	51	91	25	-3	5
BW:	ADJ WW:	Feb 14. WT:	PROJ WT:	AOD:		
86 lbs.	719 lbs.	1226 lbs.	1410 lbs.	2		

A stout, thick, deep sided bull out of a moderate framed, feminine 2-year-old Northern View RIP 17D daughter.



45

LOTS
46-49

COMMERCIAL HEIFERS

46

HI LOW ANGUS

Group 1	3 March born Black Angus Heifers	~850 lbs
Group 2	3 March born Black Angus Heifers	~900 lbs
Group 3	3 April born Black Angus/Simm Heifers	~950 lbs

47

BELL ANGUS

Group 1	3 Black Angus Heifers	~950 lbs
Group 2	3 Black Angus Heifers	~900 lbs

48

TRIPLE H ANGUS

Group 1	3 Black Angus/Simm Heifers	~900 lbs
Group 2	3 Red Angus Heifers	~750 lbs

49

NU-HORIZON ANGUS

Group 1	3 Black Angus/Simm Heifers	~750 lbs
Group 2	3 Red Angus Heifers	~725 lbs












Between now and December 31st, 2022 active Members of the SSGA will receive a **\$1,250 Young's Equipment Gift Card** for Parts and/or Service at any Young's Equipment location with the purchase of any of the following new units:

- Case IH MFD Loader Tractor (60-185 HP)
- Case IH RB565 Round Baler
- NDE Vertical Mixer
- Highline *NEW* BP60 series Bale Pro®

In addition to that, **we will donate \$250 per unit sold** to the Saskatchewan Stock Growers Association to support their formidable cause.

AGI LIVESTOCK SOLUTIONS



aggrowth.com



*Offering veterinary service
to Melville and area
since 1974*



MELVILLE VETERINARY CLINIC

202 Heritage Drive Melville, SK S0A 2P0

T: 306-728-4456 F: 306-728-4460

www.melvillevetclinic.com

Our compassionate and knowledgeable veterinary health team is dedicated to your small and large animal health needs.

Dr. Zachary Johnson DVM, Practice Owner - Dr. Charlotte Tyson BSc, DVM

Dr. Barbara Evans BSc, DVM, CVA - Dr. Jessica Murray DVM - Dr. Brandi Bakken BSc, DVM

Breanna Issel RVT - Kimberly Berger RVT - Shauna Schmidt RVT - Kiana Campbell RVT - Madison Harrold RVT

Kylie Johnson, Practice Owner - Nadine Bjornerud - Monica Sawley - Paxtyn Kruger - Krystal Baxter

Feeding forage in the winter is the most expensive part of maintaining a cow especially in a year like this. Stretch your forages with SweetPro and see around 20% in hay savings.

CANADA 
SweetPro®
 PREMIUM SUPPLEMENTS



"We feed a 50% silage dry matter ration up to 40% to 45% lentil and cereal straw most years. With Sweetpro Stage of Growth tubs and Mineral EX II tubs, we can control consumption to where we want it and control the cost depending on feed quality. We have seen up to 20% total reduction in feed when used at .75 to 1 pound a day. And with grain and forage prices the cost of running Sweetpro at a higher consumption is an easy decision."

-Tanner Allemand,
 Allemand Enterprises
 Shaunavon, SK



**nutrition
 partners**
 204.726.8239

FIND A DEALER NPFEEDORDERS@NUTRITIONPARTNERS.CA

The Right Ingredients in The Right Block


PEAK
 VETERINARY HEALTH

#2 Brock Drive PO Box 1143
 32nd Ave – Brock Industrial Park
 1 mile south of Johnstones Auction
 Moose Jaw, SK. S6H 4P8
 (306) 692-4800
 peakvet@sasktel.net

Dr. Terry Goslin
 Dr. Laurie Zemlak
 Dr. Laura Ferguson

Dr. Tyson Buyer
 Dr. Hanna Hone

NOW ACCEPTING NEW CLIENTS!

Peak is a merged practice between Western Veterinary Services Moose Jaw and Ranchland Veterinary Services Carnduff. We are excited to offer in clinic and on farm advanced large animal reproduction including IVF, conventional flushing, and owners use semen collection as well as mobile large animal emergency and routine services. In clinic small animal medicine, surgery, and emergency services are now also available.

TERMS & CONDITIONS

TERMS...

The terms of the sale are cash or cheque, payable at par at the sale location. The right of property shall not pass until after settlement has been made; no invoicing on buyers in attendance unless previous arrangements have been made. Every animal sells to the highest bidder and in cases of disputes, the auctioneer's decision will be final.

Announcements made from the auction block will take precedence over the printed matter in the catalogue. Current exchange rates will be announced sale day. All monies are in Canadian funds.

CERTIFICATE OF REGISTRATION...

Each animal will carry papers issued by the Canadian Angus Association. A certificate of registry duly transferred will be furnished to the buyer for each animal after payment has been made.

PEDIGREE ESTIMATES...

Pedigree Estimates (PE) are created on the projected mating of the animal's sire and dam based on averages of the two, creating estimated values that do not hold the same accuracy of actual EPDs issued from the association and should be used as such.

HEALTH...

All animals in the sale have met all necessary health requirements.

GUARANTEE...

Each animal becomes the purchaser's risk immediately after the animal is sold. All animals in this sale will be sold under the terms and guarantees set forth by the Canadian Angus Association with regard to health, freedom from defects and from both reproductive and specific genetic unsoundness.

INSURANCE...

We strongly recommend that insurance is purchased for full value.

PHONE, MAIL & WIRE BIDS...

Bidders unable to attend the sale may phone, wire or mail their bids and instructions to the sale manager, auctioneer or special representatives. Bids must be received in sufficient time prior to the sale.

LIABILITIES...

All persons attend the sale at their own risk. The seller, facility owner and sale manager assume no liability, legal or otherwise, for any accidents that occur. It is understood that T Bar C Cattle Co. (2013) Ltd. is acting only as a medium between buyer and seller and is not responsible for any obligations to collect or enforce collection of any monies between parties and any legal action that may, in extreme cases, be taken must be between buyer and seller. T Bar C Cattle Co. (2013) Ltd. assumes no responsibility of any credit extended by the seller to the buyer. The buyer must look to the seller for fulfillment of all guarantees and representations made hereunder.

ERRORS...

All announcements at sale time, written or oral, supersede any written material in the catalogue.

DELIVERY...

Delivery can be arranged at a cost of \$100 per bull within 300 km of Moose Jaw. If you are over 300 km we can assist you in making travel arrangements at cost.

We are proud to support the **Canadian Angus Foundation** **15 for 50 Program**

With **YOUR** help we will continue to further the Foundation's mission and the breed.

15%
of a lot
means
a lot...

In 2019 over \$80,000 was **INVESTED** in member education, awards, bursaries and youth scholarships.

\$180,000 invested in **ANGUS** research over the last three years leveraged an additional \$360,000 in grant funding.

\$60,000+ has been invested in history and archives, including the 2019 Canadian Angus history book.

If you are interested in giving back or learning more about this new initiative, please contact Belinda Wagner, Canadian Angus Foundation Executive Director at 306-757-6133 or email bwagner@cdnangus.ca. You can also visit the Canadian Angus Foundation website at www.cdnangus.ca/foundation/.



The Canadian Angus Foundation functions to preserve and expand the Angus breed for future generations through education, youth development, scientific and market research, and historical preservation and restoration. The Canadian Angus Foundation was incorporated in 1993 and is the charitable arm of the Canadian Angus Association. Donations are tax deductible.

Return Undeliverable
Canadian Addresses To:
T Bar C Cattle Co. Ltd.
Box 2330
Warman, SK S0K 4S0



RETURN POSTAGE GUARANTEED
PORT DE RETOUR GARANTI

Cottonwood Angus



Nu-Horizon Angus



Willowview Angus



Hi Low Angus



Triple H Angus



Bell Angus



Created by
Today's
Publishing